

**Topaz Photo
Replaces**

~~**Topaz Photo AI**~~

Overview (As in *Snapshot*)

- Announcements
- **Topaz Photo vs Topaz Photo AI**
- Using Screen Capture to Create Notes (**WARNING**)
- Current **Topaz Photo** Filters
- Demonstrate **Topaz Photo** Filters I Use Routinely
- Demonstrate Processing Multiple Images
- ~~Adjust the sharpening down after using Camera Raw~~
 - Instead in Camera Raw/Lightroom use less: Texture & Clarity

Overview (Recently Included)

- Kris Bosworth's images
- **UPDATED Topaz Photo Filters**
 - Wonder 3 Demonstration
- **NEW Topaz Web Service**
 - Thanks to **Richard Ader** for emailing me a note about this on **Monday!**
- Q & A
 - You **may interrupt me** to ask your question.
 - There will be time **during** and at the **end**.

Announcements

- My previous presentations have been about **Topaz Photo AI**.
- This presentation is about **Topaz Photo**.
- I'll comment on **Topaz Photo vs Topaz Photo AI** soon.

Announcements

- Beside the **recorded video** of tonight's meeting
- A pdf file of these **slides**,
- With ALL the **links**,
- And pdf files of my **Demonstration Notes**,
- Will be available **to ALL at the CPS website.**
- So, just **RELAX** and follow along

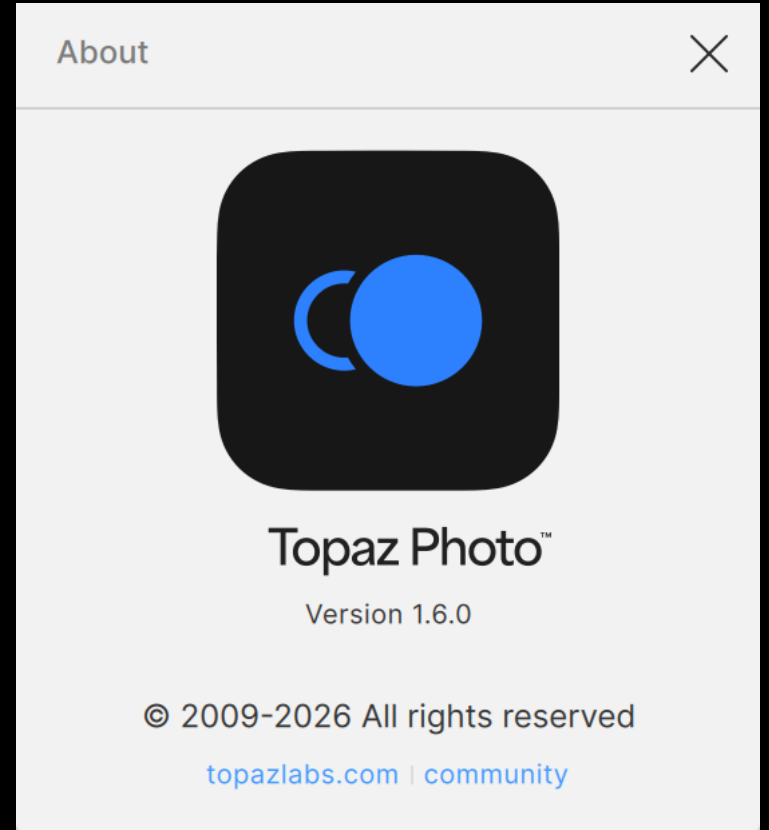


Announcements

- I have found NO problems with **Topaz Photo** .
- I do NOT know how consistent **Topaz Photo** is across platforms.
 - I use an Apple computer.
 - Please confirm that **Topaz Photo** behaves similarly on your computer.

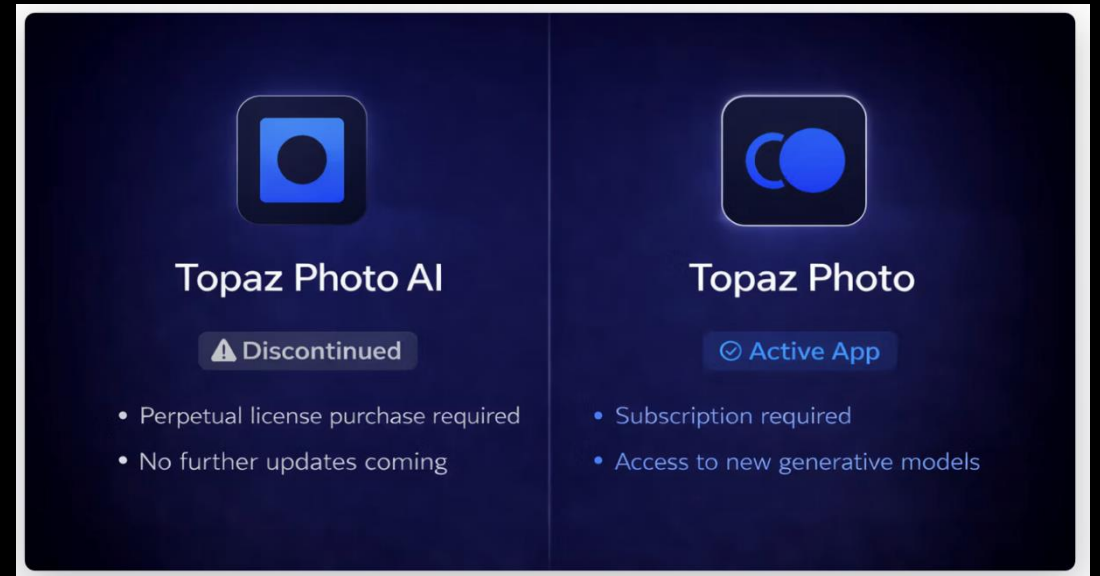
Announcements

- I used Topaz Photo version 1.6.0 to develop this presentation.
- I have kept that version so I will get the same results tonight.



Topaz Photo vs Topaz Photo AI

- It was clear from the release of **Topaz Photo** that it would replace **Topaz Photo AI**.
 - Topaz announced that all new development would only be in **Topaz Photo**.
 - **Topaz Photo AI** and **Topaz Photo** were clearly too similar for Topaz to maintain both.
- Now Topaz says:



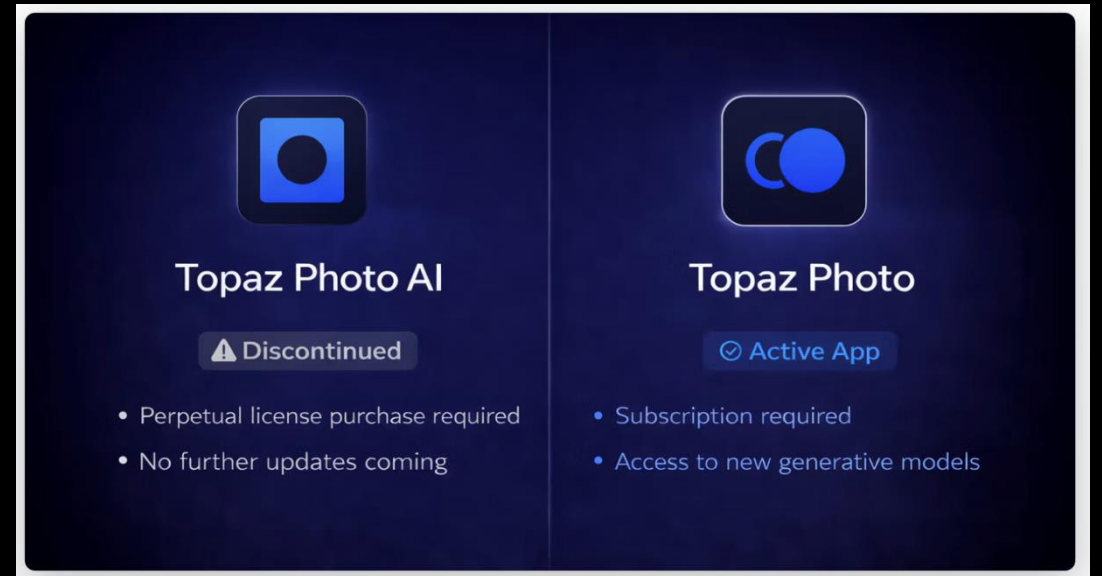
Topaz Photo vs Topaz Photo AI

Topaz's Webpage

- **Status**

- **Topaz Photo AI:**

- **Discontinued**, Legacy app
- **No model updates** will be released
- Photo AI **v4.0.4** is the **final version**



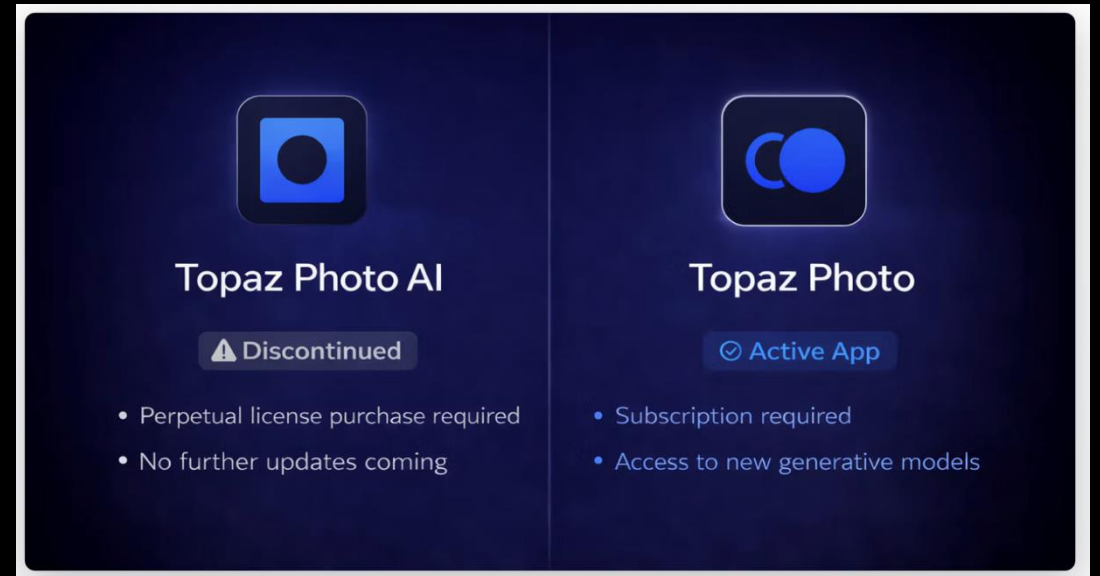
Topaz Photo vs Topaz Photo AI

Topaz's Webpage

- **Status**

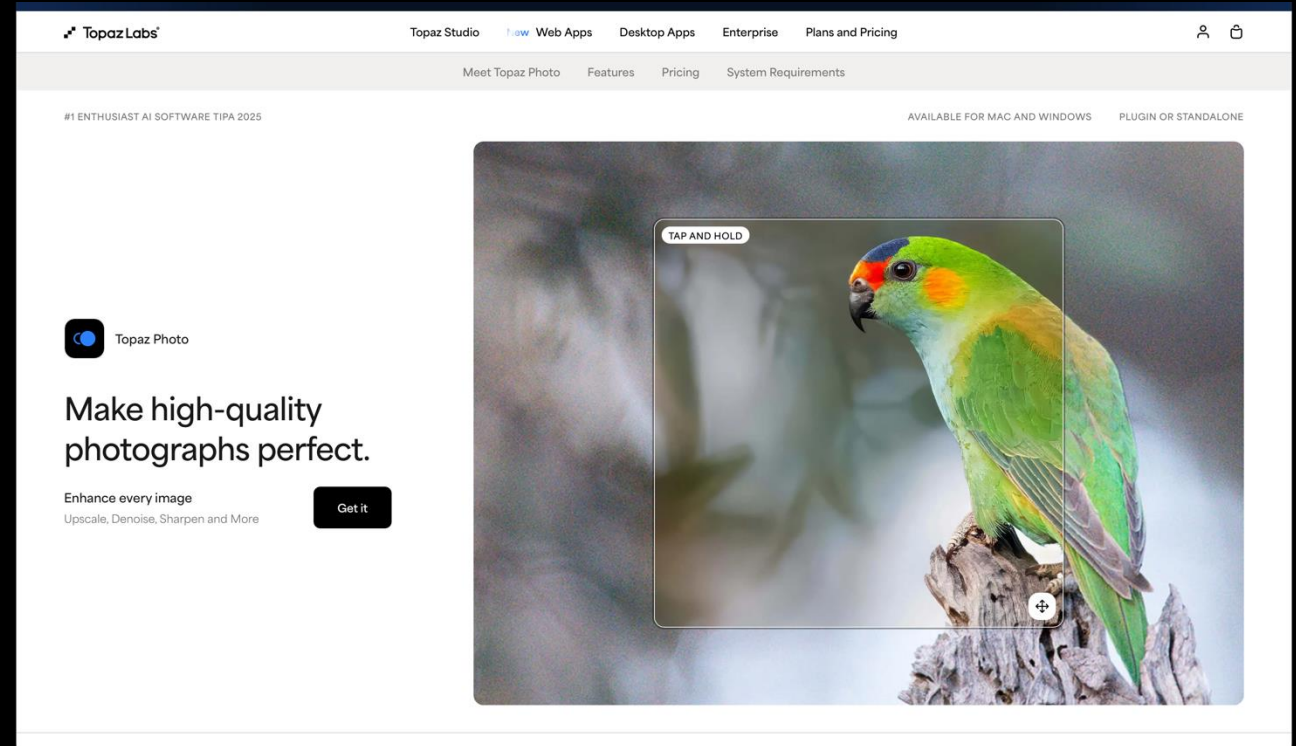
- **Topaz Photo:**

- Ongoing updates and development
- See all Releases [here](#)
- Latest version is available here in our [Downloads Page](#)
- No AI in naming.
- Plugin naming will show as: Topaz Photo (Studio)



Topaz Photo vs Topaz Photo AI

- The **Topaz Photo** has
 - New user interface
 - Updated & New filters
 - Updated & New AI models
- In my opinion, **Topaz Photo** is better than **Topaz Photo AI**.



Using Screen capture to Create Notes

- **Topaz Photo** can **temporally** save how images were processed when closing them.
 - If the image's processing information was saved, then restarting **Topaz Photo** reopens the saved images and reprocesses them.
 - Once you close the images without again saving the processing information, it is lost.
- To permanently save this information, I take screen captures of each step of the processing and store them in a PDF file.
- **BRIDGE - 1 Screen Capture Notes**

Using Screen capture to Create Notes

WARNING!

- **Topaz Photo AI models are updated frequently.**
- **Updating an AI model changes how it processes an image!**
 - You can only reproduce your results by following your notes until any model used is updated.
 - Notes may still serve as a guide for reprocessing an image.
 - I am taking fewer notes and reprocess from scratch for simple sessions.

Using Screen capture to Create Notes

WARNING!

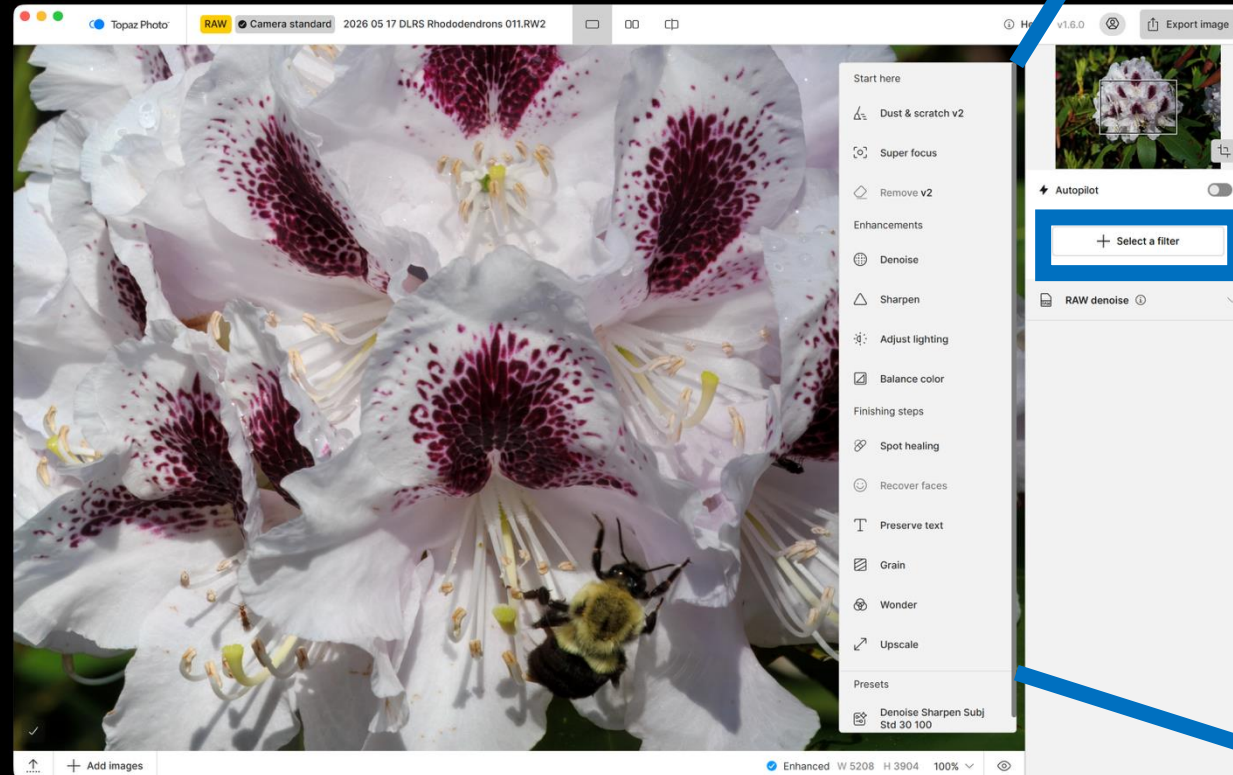
- **Topaz Photo AI models are updated frequently.**
- **Updating an AI model changes how it processes an image!**
 - This is why I kept Topaz Photo version 1.6.0 for this presentation.
 - This maybe why Topaz Photo only temporally saves how images were processed.

Current Topaz Photo Filters

- Filters I **DO USE** will be shown in **GREEN**.
- Filters I **DON'T USE** will be shown in **RED**.
 - Does NOT indicate how well these filters perform.
- I prefer to do some actions with **C**amera **R**aw or **L**ightroom so that I can later modify it.
 - These will be indicated with (**CRL**).
- Others I have **Not Needed** to use.
 - These will be indicated with (**NN**).

Current Topaz Photo Filters

- Topaz Photo Filters
 - Breaks it to three sections



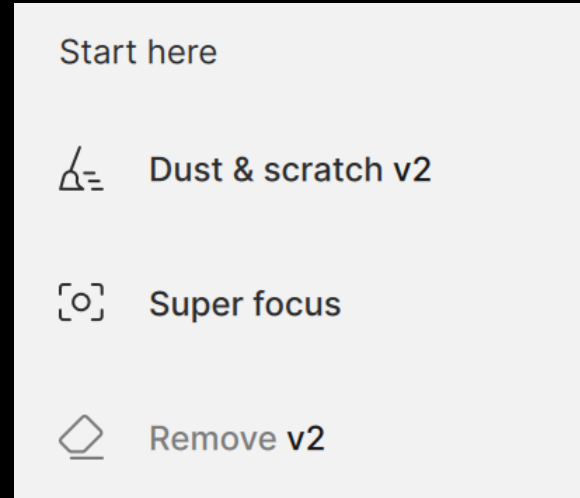
- Start here
 - Dust & scratch v2
 - Super focus
 - Remove v2

- Enhancements
 - Denoise
 - Sharpen
 - Adjust lighting
 - Balance color

- Finishing steps
 - Spot healing
 - Recover faces
 - Preserve text
 - Grain
 - Wonder
 - Upscale

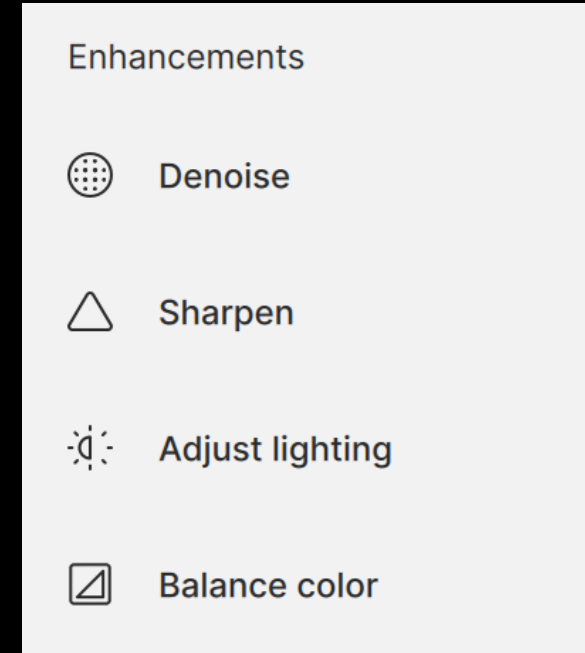
Current Topaz Photo Filters

- **Dust & scratch (CRL)**
- **Super focus**
 - I have demonstrated before
 - But seldom use
- **Remove (CRL)**



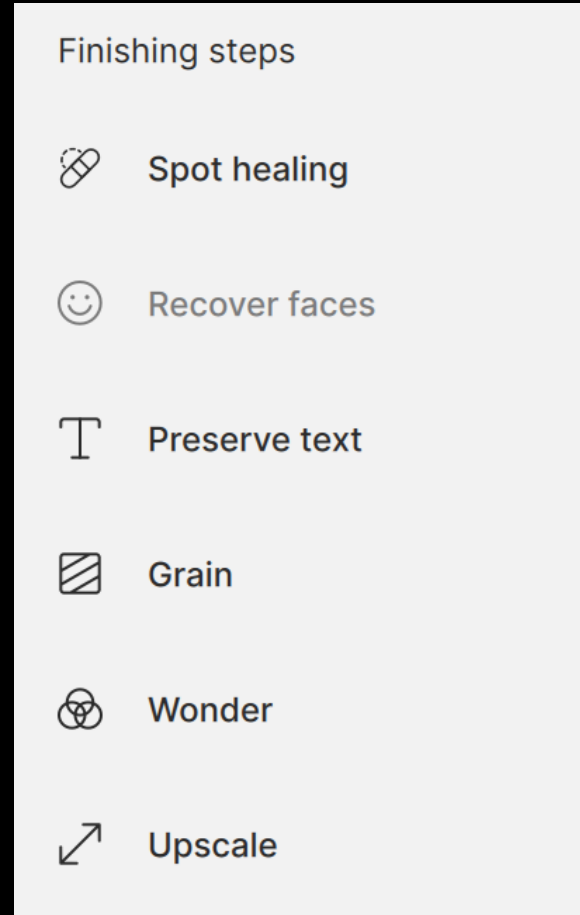
Current Topaz Photo Filters

- **RAW Denoise** (Default with RAW files)
 - I'll demonstrate
- **Denoise** (Non RAW files, seldom)
 - I have demonstrated before
- **Sharpen**
 - Similar to Topaz Photo AI
 - I'll demonstrate
- **Adjust lighting (CRL)**
- **Balance color (CRL)**



Current Topaz Photo Filters

- Spot healing (CRL)
- Recover Faces (seldom)
- Preserve Text (seldom)
- Grain (CRL)
- Wonder (NN)
 - Show sample
- Upscale (usually 2x)
 - Demonstrate
- Crop (CRL)



Demonstrate Topaz Photo Filters I Use Routinely

- BRIDGE - 2 Topaz Photo features I use



Q & A

- Comments & Questions



Demonstrate Processing Multiple Images

- BRIDGE - 2 Processing multiple images



Q & A

- Comments & Questions



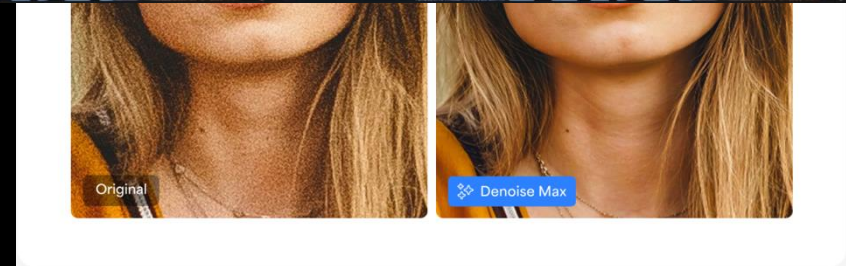
Kris Bosworth's Images

- BRIDGE – 3 Kris Bosworth images



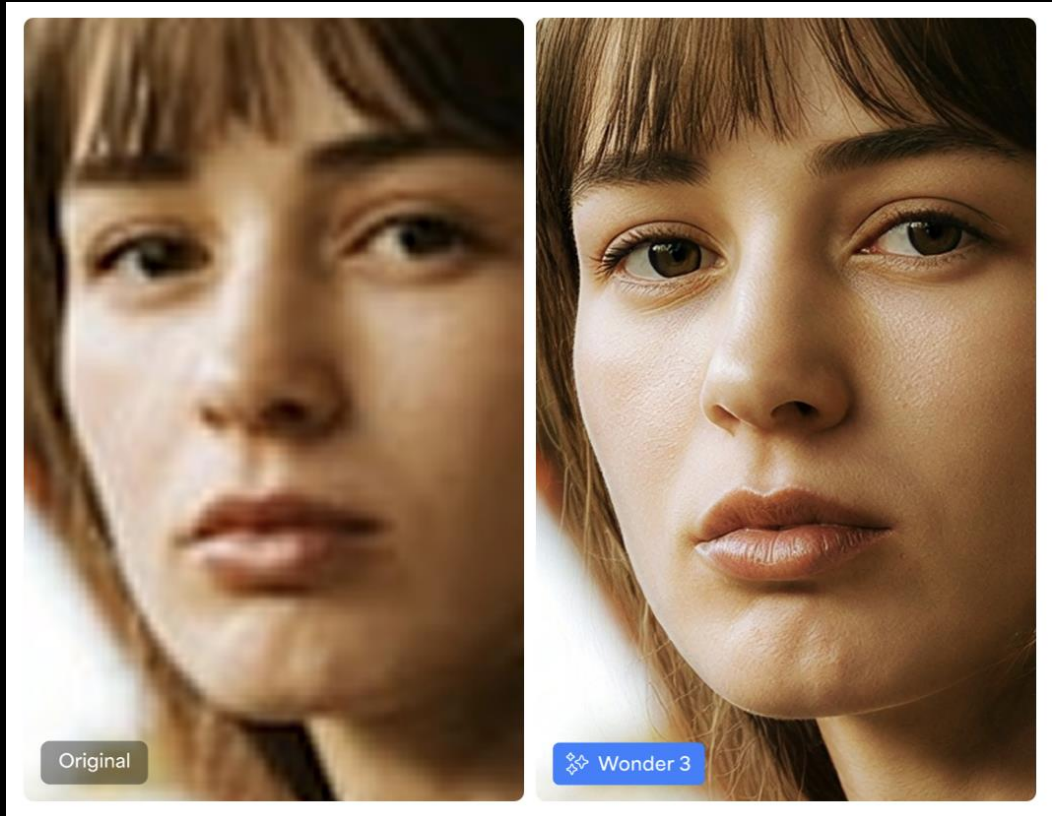
UPDATED Topaz Photo Filters

- Topaz Photo UPDATES include:
 - Denoise Max
 - Face Recovery 3
 - Super Focus 3
- I previously demonstrated earlier versions.
- I have not used the updated versions, so I have no comments.



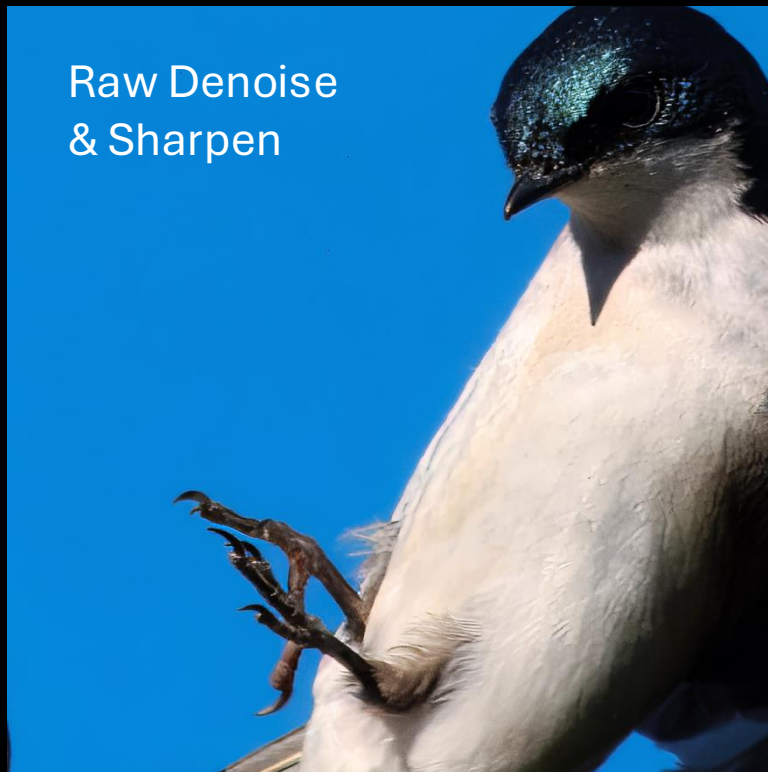
NEW Topaz Photo Filters

- **Wonder 3** - upscale, sharpen, and denoise all in one.
- I used **Wonder 3** on **one** image.



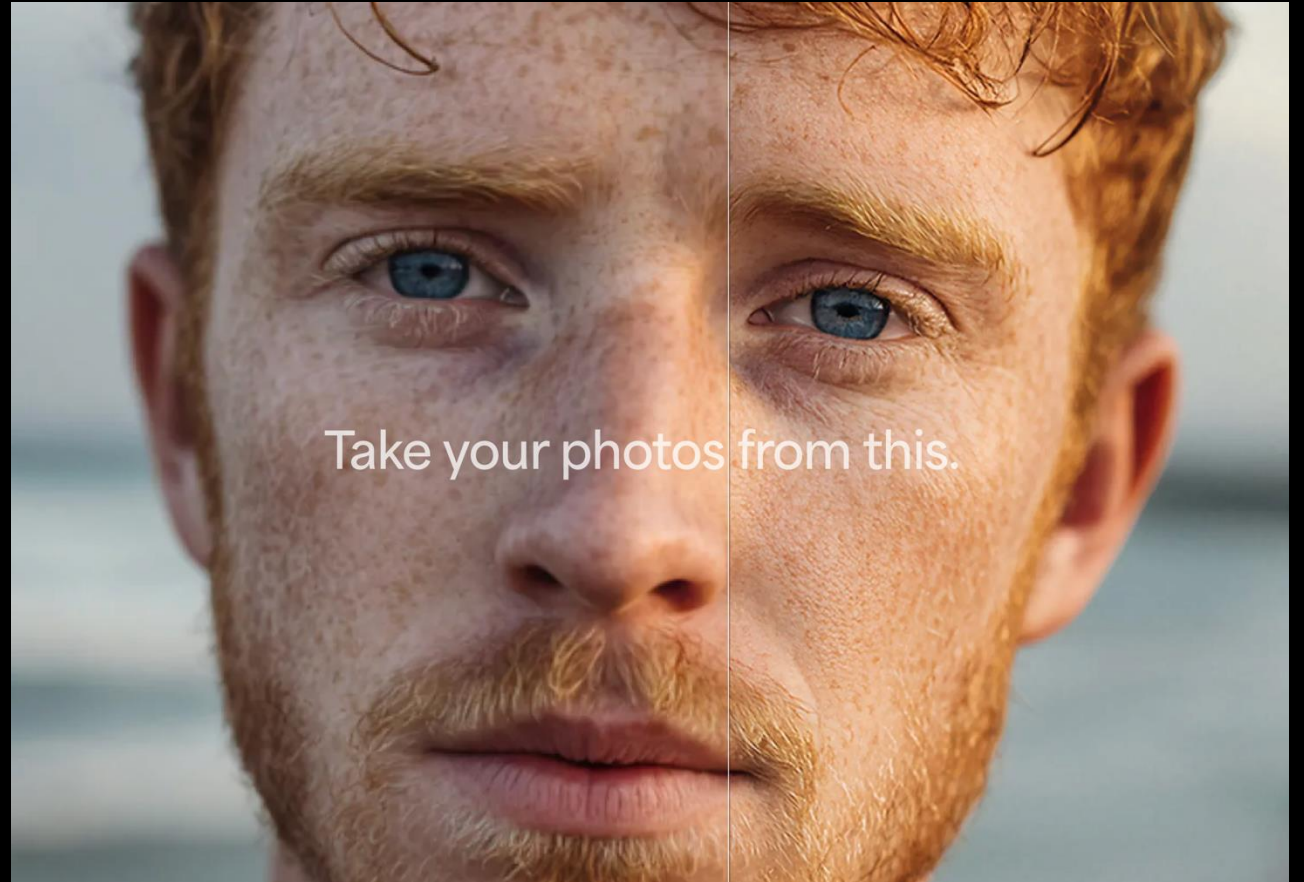
NEW Topaz Photo Filters

- BRIDGE - 5 Wonder 3 Result



NEW Topaz Web Service

- [Topaz Image Web](#)



The image features a central vertical opening framed by two panels of rich red, vertically-pleated curtains. The opening reveals a bright blue sky filled with numerous small white stars, suggesting a night sky or a celestial scene. The overall composition is symmetrical and centered.

The End

Q & A

- Comments & Questions

